

## **APPENDIX C - RC3000 DC MOTOR CONTROLLER**

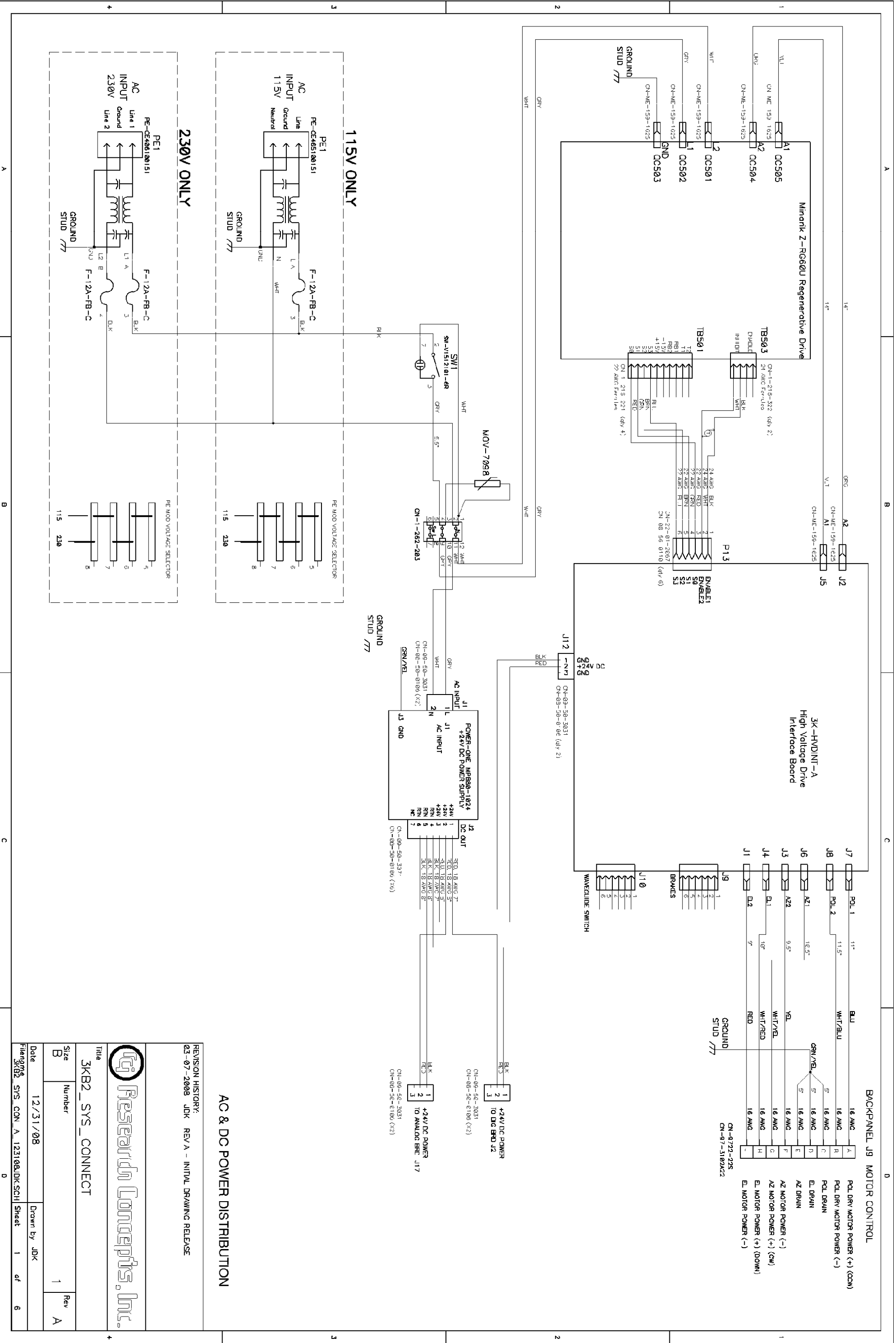
July 6, 2009

This appendix documents how the DC Motor Controller is configured for different variations of the RC3000. Use this appendix for serial numbers 2000 and greater.

This ACU employs the Minarik RG60U. The Minarik documentation is included in the back cover of the written manual. The electronic copy is located:

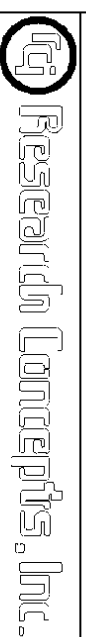
CD\_ROM\RCIProductLiteratureCD\RC3000\appendices\ Minarik Drive Manual.pdf

- RC3000B Drive Interconnect Drawing
- High Voltage Drive Interface



AC & DC POWER DISTRIBUTION

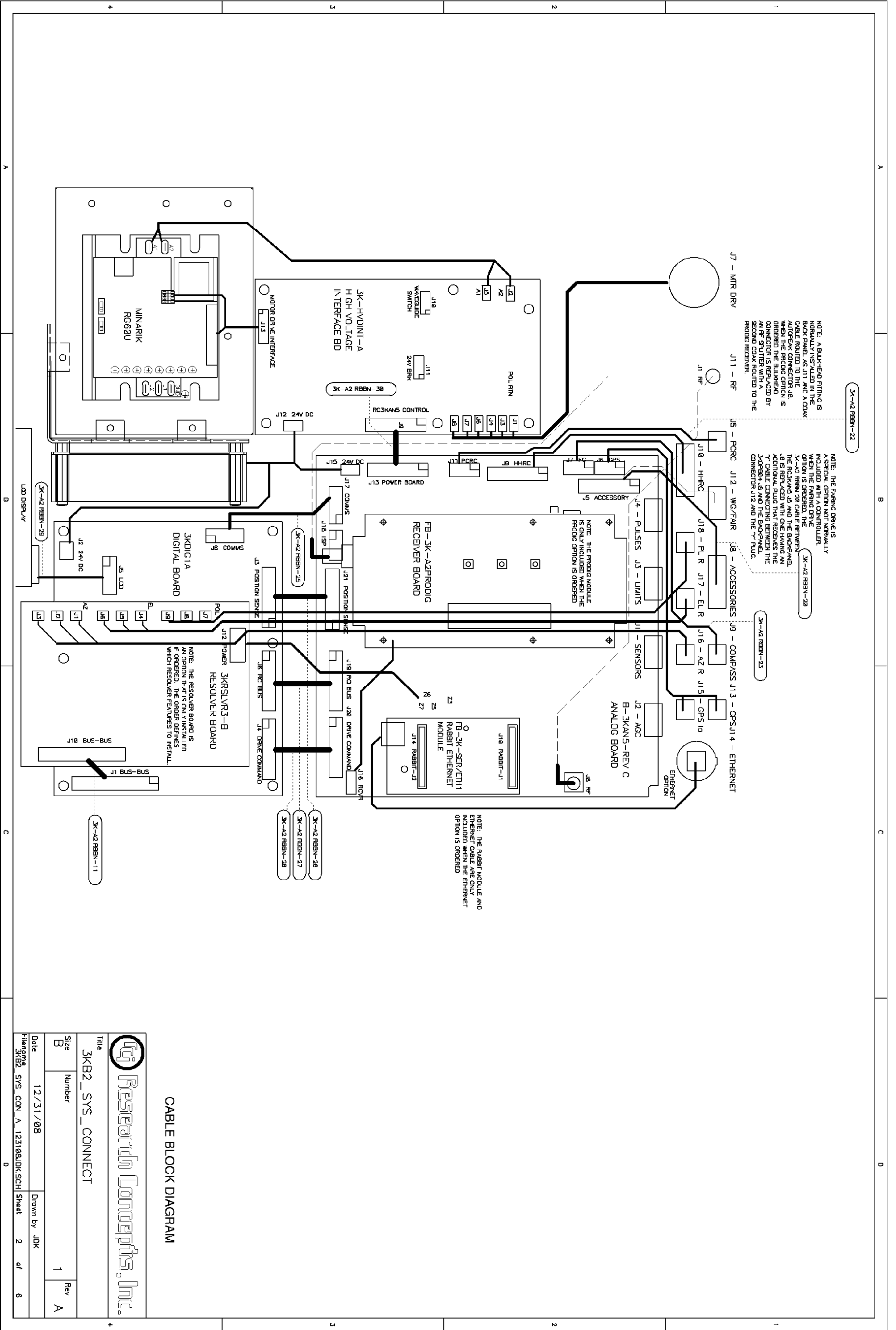
REVISION HISTORY:  
03-07-2008 JDK REV A - INITIAL DRAWING RELEASE



Title  
3KB2\_SYS\_CONNECT

Size	Number	Rev
B		A

Date	12/31/08	Drawn by	JDK
File name	3KB2_SYS_CON_A_123108.JDK.SCH	Sheet	1 of 6



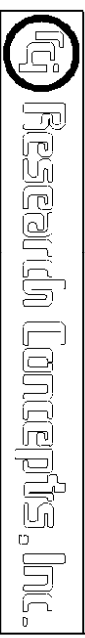
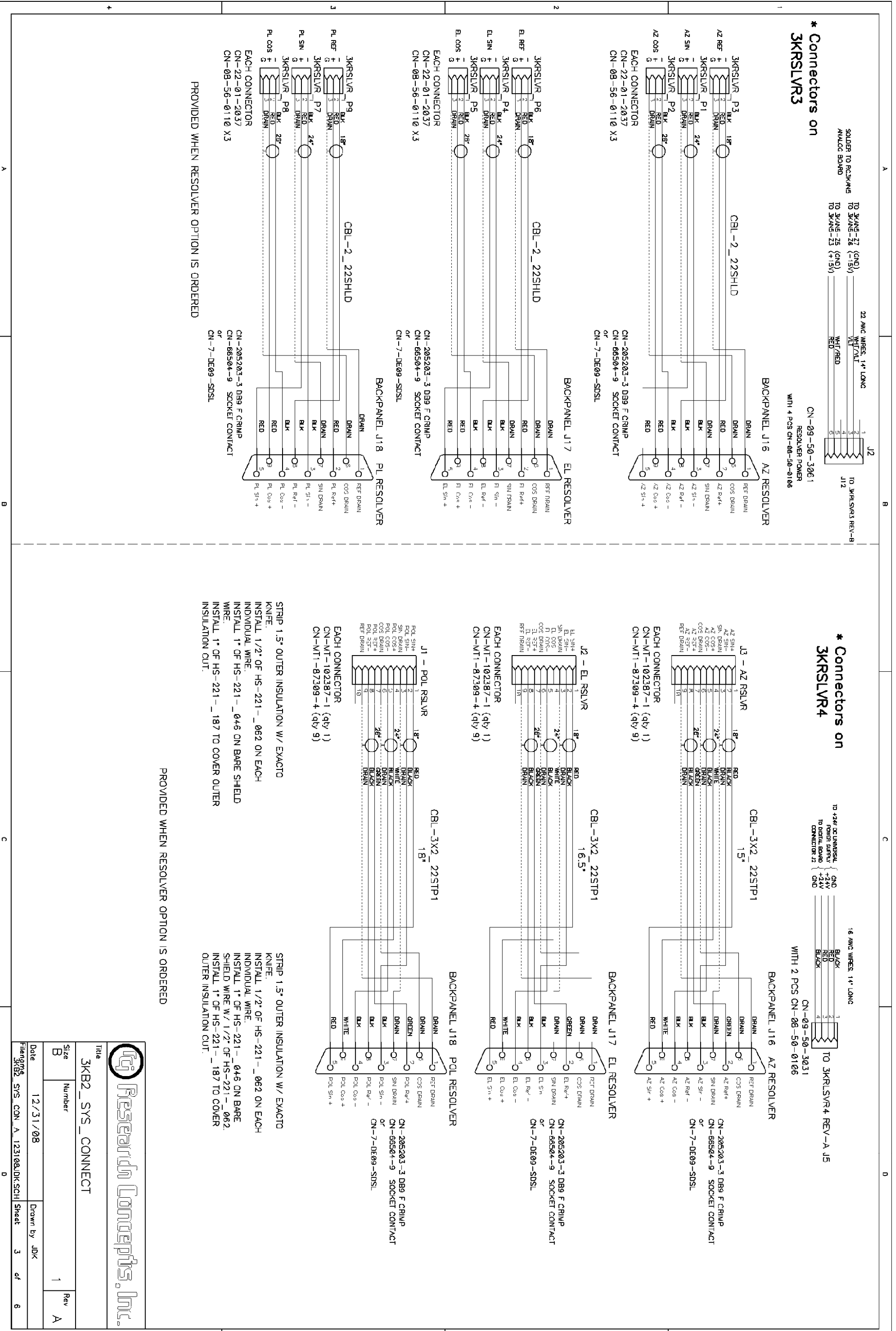
CABLE BLOCK DIAGRAM



Title  
3KB2\_SYS\_CONNECT

Size	Number	Rev
B	1	A

Date	12/31/08	Drawn By	JDK
File Name	3KB2_SYS_CON_A_123108.BDK.SCH	Sheet	2 of 6



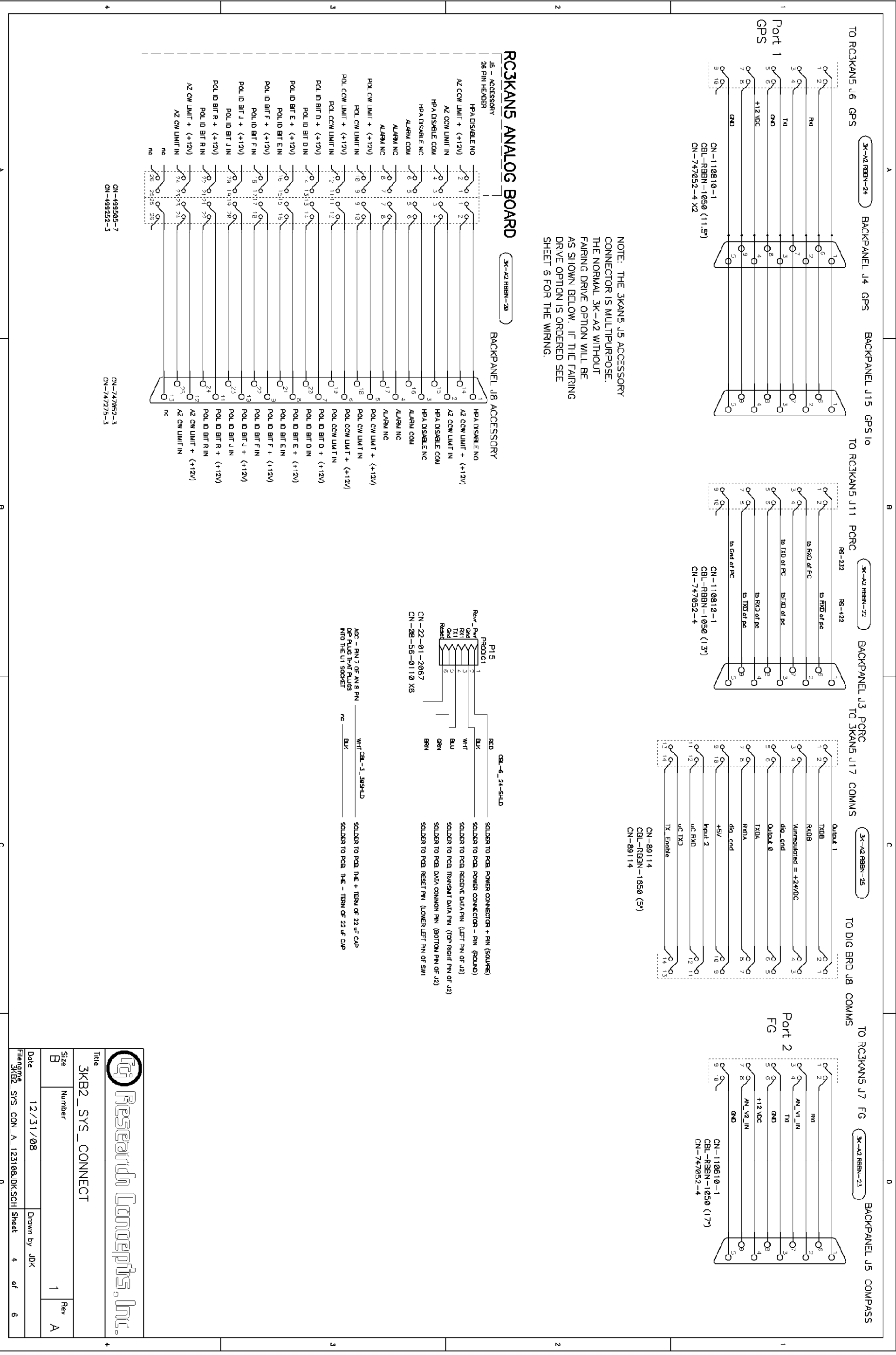
Title  
 3KB2\_SYS\_CONNECT

Size  
 B

Date  
 12/31/08

Drawn by  
 JOK

Sheet  
 3 of 6



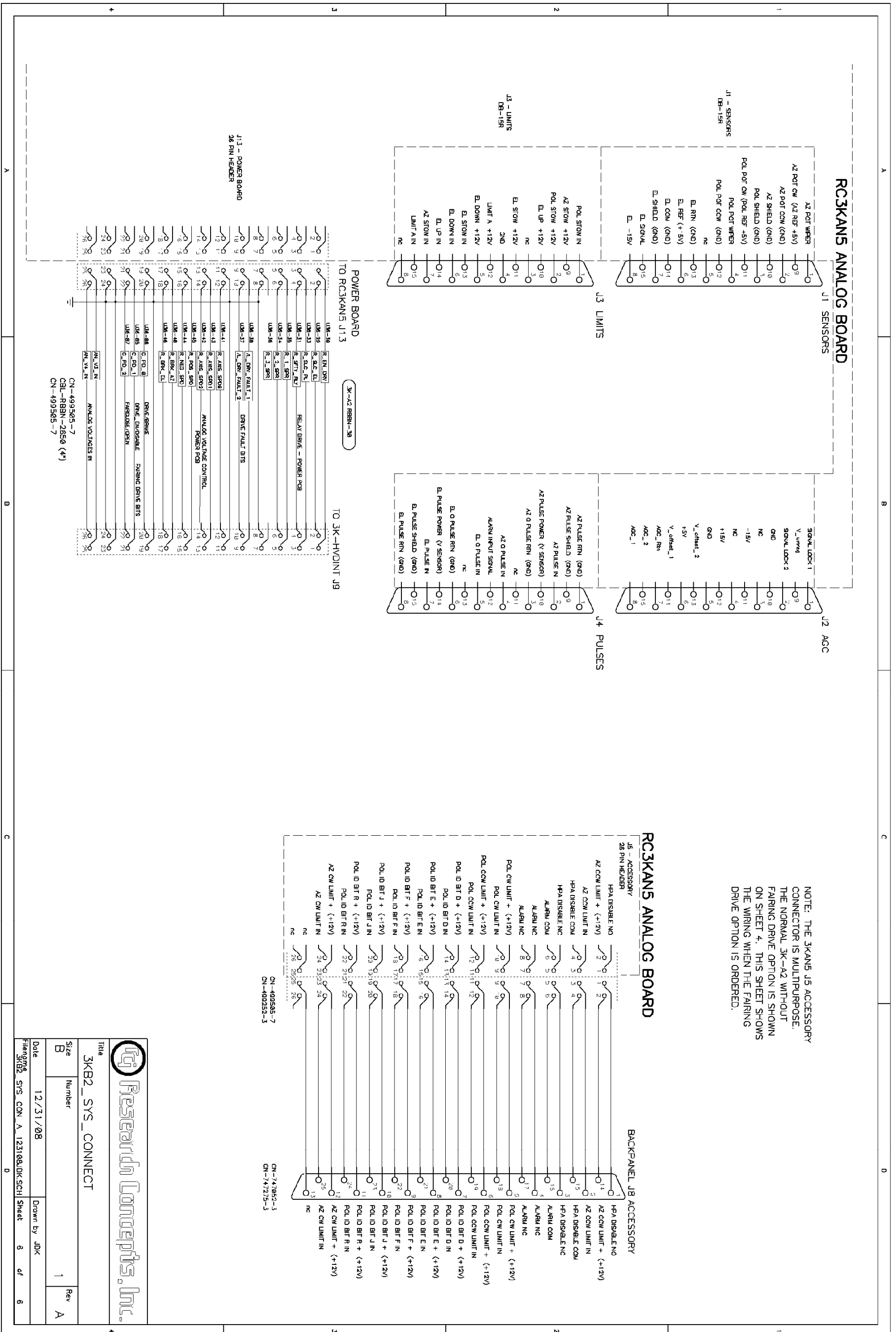
Title: 3KB2\_SYS\_CONNECT

Size	Number	Rev
B	1	A

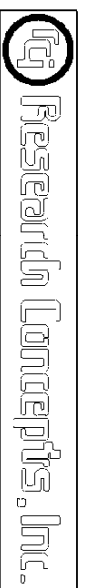
Date: 12/31/08  
Drawn by: JOK  
Sheet 4 of 6

File: 3KB2\_SYS\_CON\_A\_123108/JDK/SCH





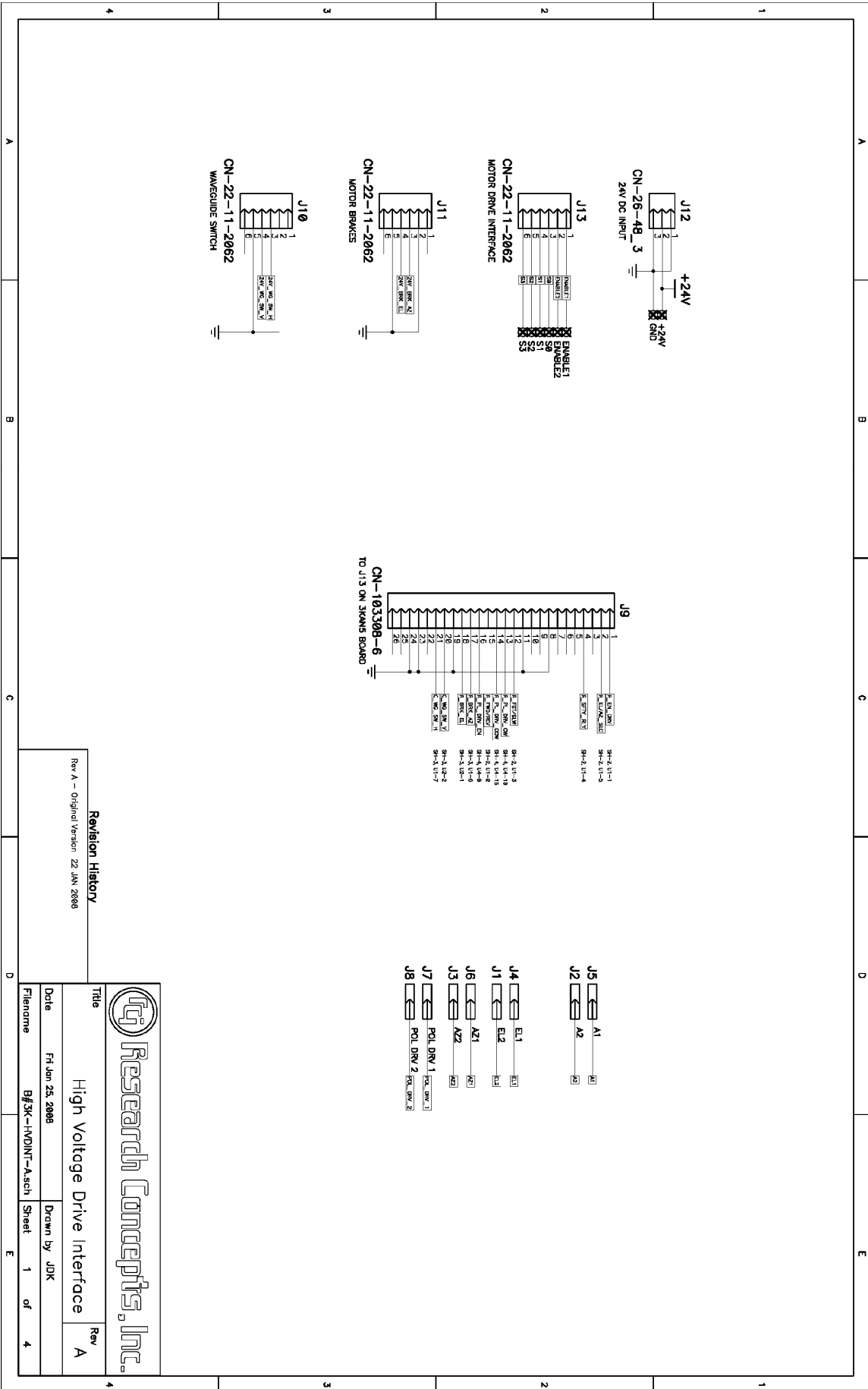
NOTE: THE 3KANS J5 ACCESSORY CONNECTOR IS MULTIPURPOSE. THE NORMAL 3K-A2 WITH-OUT FARRING DRIVE OPTION IS SHOWN ON SHEET 4. THIS SHEET SHOWS THE WIRING WHEN THE FARRING DRIVE OPTION IS ORDERED.



Title: 3KB2\_SYS\_CONNECT

Size	Number	Rev
B	1	A

Date: 12/31/08  
 Drawn By: JDK  
 Sheet: 8 of 8



Revision History  
 Rev A - Original Version 22 JUN 2008

**Research Concepts, Inc.**

Title: High Voltage Drive Interface

Date: Fri Jan 25, 2008

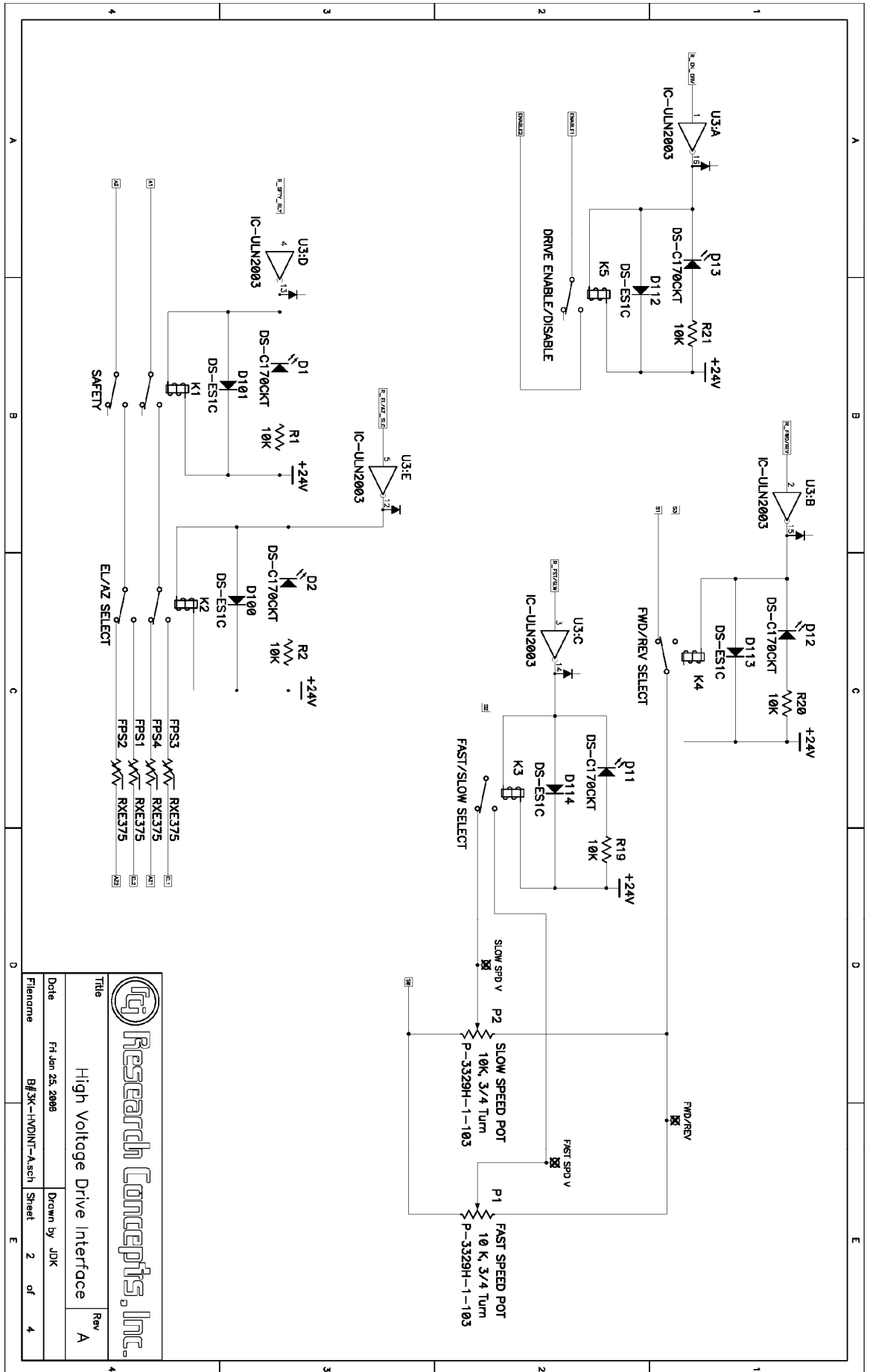
Filename: Bf3K-HVDINT-Asch

Drawn by: JDK

Sheet 1 of 4

Rev A





**Research Concepts, Inc.**

**Title:** High Voltage Drive Interface

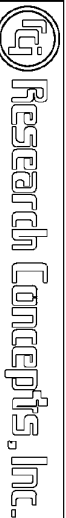
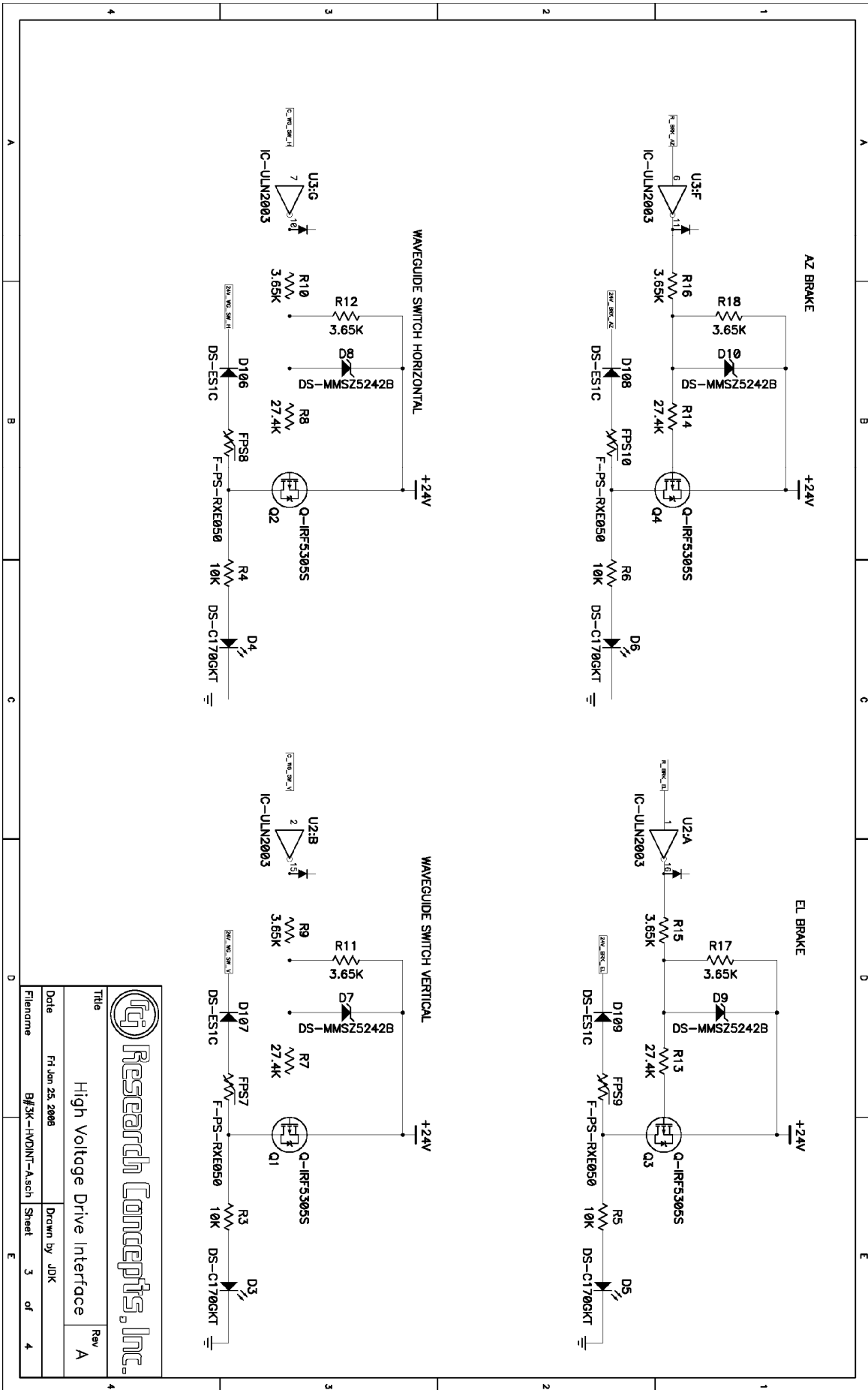
**Rev:** A

**Date:** Fri Jun 25, 2008

**Drawn by:** JDK

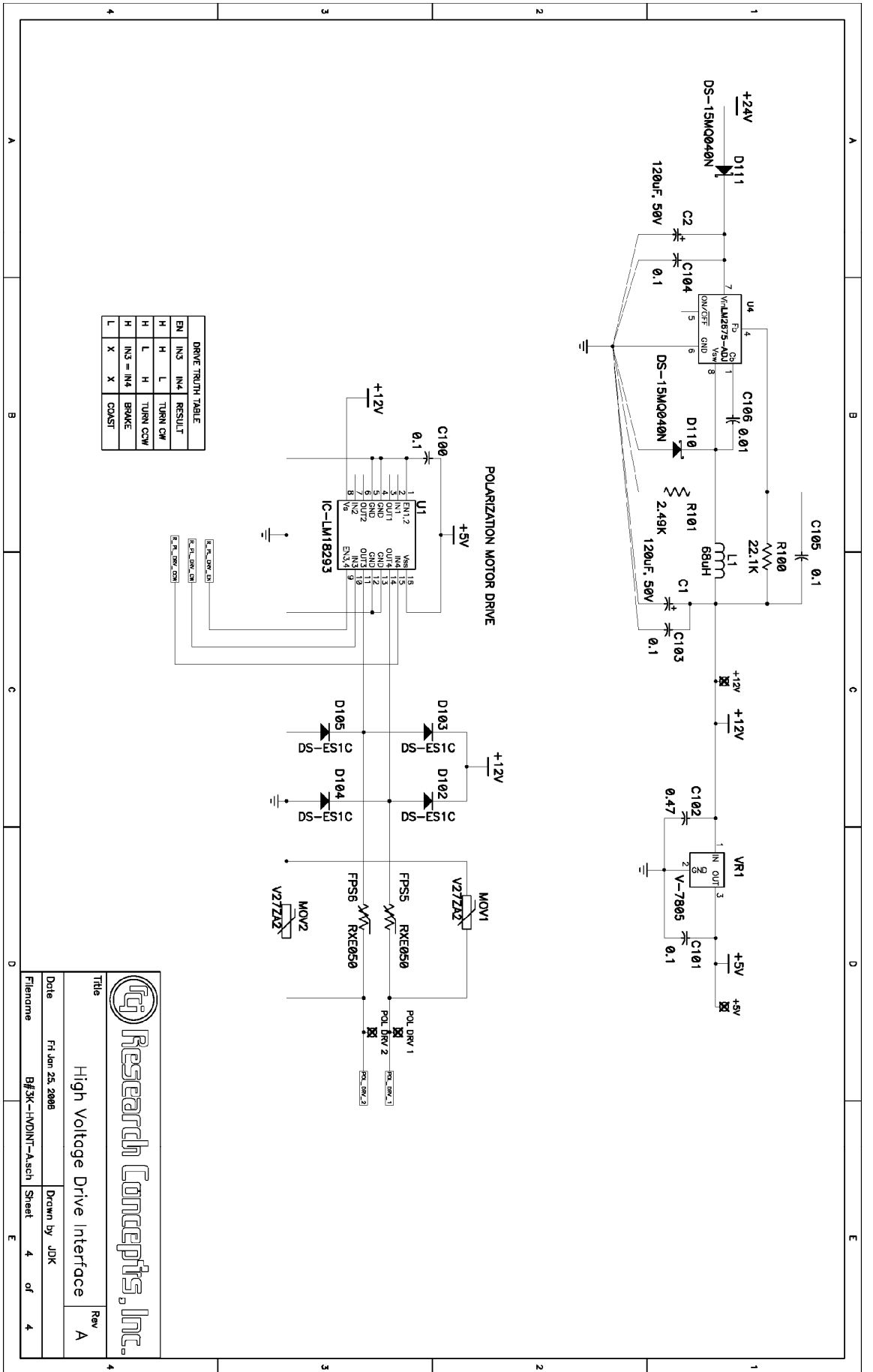
**Filename:** B#3K-1V0DIN-A.sch

Sheet 2 of 4



High Voltage Drive Interface

Title	High Voltage Drive Interface	Rev	A
Date	Fri Jan 25, 2008	Drawn by	JDK
Filename	BJ3K-HVDINT-A.sch	Sheet	3 of 4



High Voltage Drive Interface

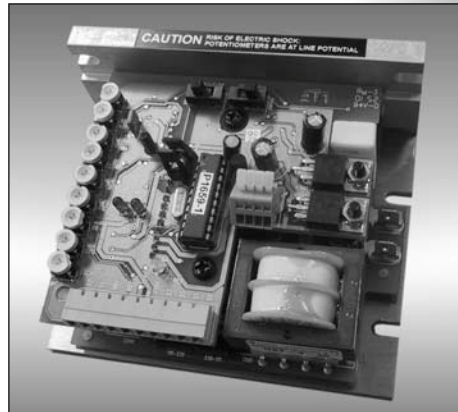
Title	Rev
Date: Fri Jun 25, 2008	A
Filename: B#/3K-HVDINT--Asch	Sheet 4 of 4
Drawn by: JDK	

**Cover page of the Minarik Drives User's Manual.**



## RG60U Series

RG60U	RG60U-PCM
RG61U	RG61U-PCM



Dual Voltage, Adjustable Speed,  
SCR Regenerative Drive for  
Permanent Magnet DC Brush Motors

**User's Manual**

### **RC3000B Appendix C Revision History**

**06 July 2009**

TO created Appendix C for 3000B with serial numbers greater than 2000. Original files include:

[\\Guinan\Engineering\RC3K\3kB\RC3000B-2\System Interconnects\3KB2\\_SYS\\_CON\\_A\\_123108JDK.pdf](\\Guinan\Engineering\RC3K\3kB\RC3000B-2\System Interconnects\3KB2_SYS_CON_A_123108JDK.pdf)

<\\Guinan\Engineering\RC3K\3kB\RC3000B-2\B#3K-HVDINT-A\Schematics\B#3K-HVDINT-A.pdf>