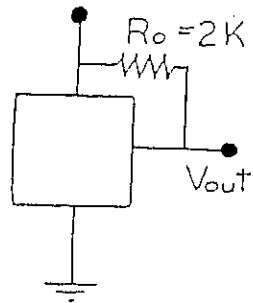
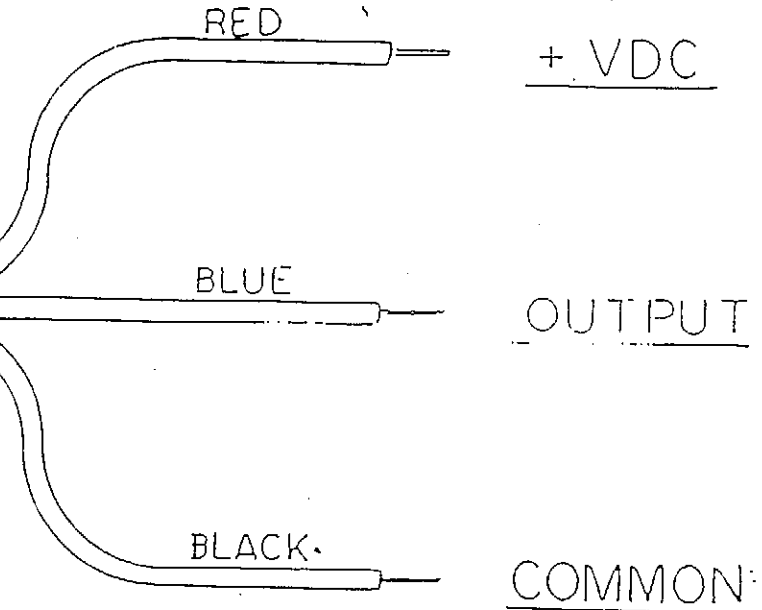
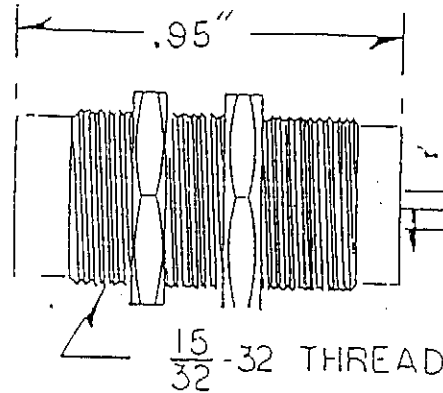


$V_{cc} = 12V$



6 INCH LEADS



OPERATION

THE OUTPUT TRANSISTOR IS NORMALLY "OFF" WHEN THE MAGNETIC FIELD PERPENDICULAR TO THE SURFACE OF THE CHIP IS BELOW THE THRESHOLD OR "OPERATE POINT." WHEN THE FIELD EXCEEDS THE "OPERATE POINT," THE OUTPUT TRANSISTOR SWITCHES "ON" AND IS CAPABLE OF SINKING 20mA OF CURRENT.

THE OUTPUT TRANSISTOR SWITCHES "OFF" WHEN THE MAGNETIC FIELD IS REDUCED BELOW THE "RELEASE POINT" WHICH IS LESS THAN THE "OPERATE POINT."
 $V_{cc} = 4.5$ TO 16VDC

ABSOLUTE MAXIMUM RATINGS

POWER SUPPLY, V_{cc} 25 V
 MAGNETIC FLUX DENSITY UNLIMITED
 OUTPUT OFF VOLTAGE 20 V
 OPERATING TEMP RANGE --- -40°C TO 120°C

	INITIAL	DATE
DR.	DES.	2-10-81
CH.		
APPR.		
SCALE		

Power/mation division

717 N. GRANDVIEW BLVD.
 WAUKESHA, WISCONSIN 53186

DESCRIPTION	DWG. NO.
DIGITAL HALL EFFECT SENSOR	84009-001