

APPENDIX C - RC3000 DC MOTOR CONTROLLER

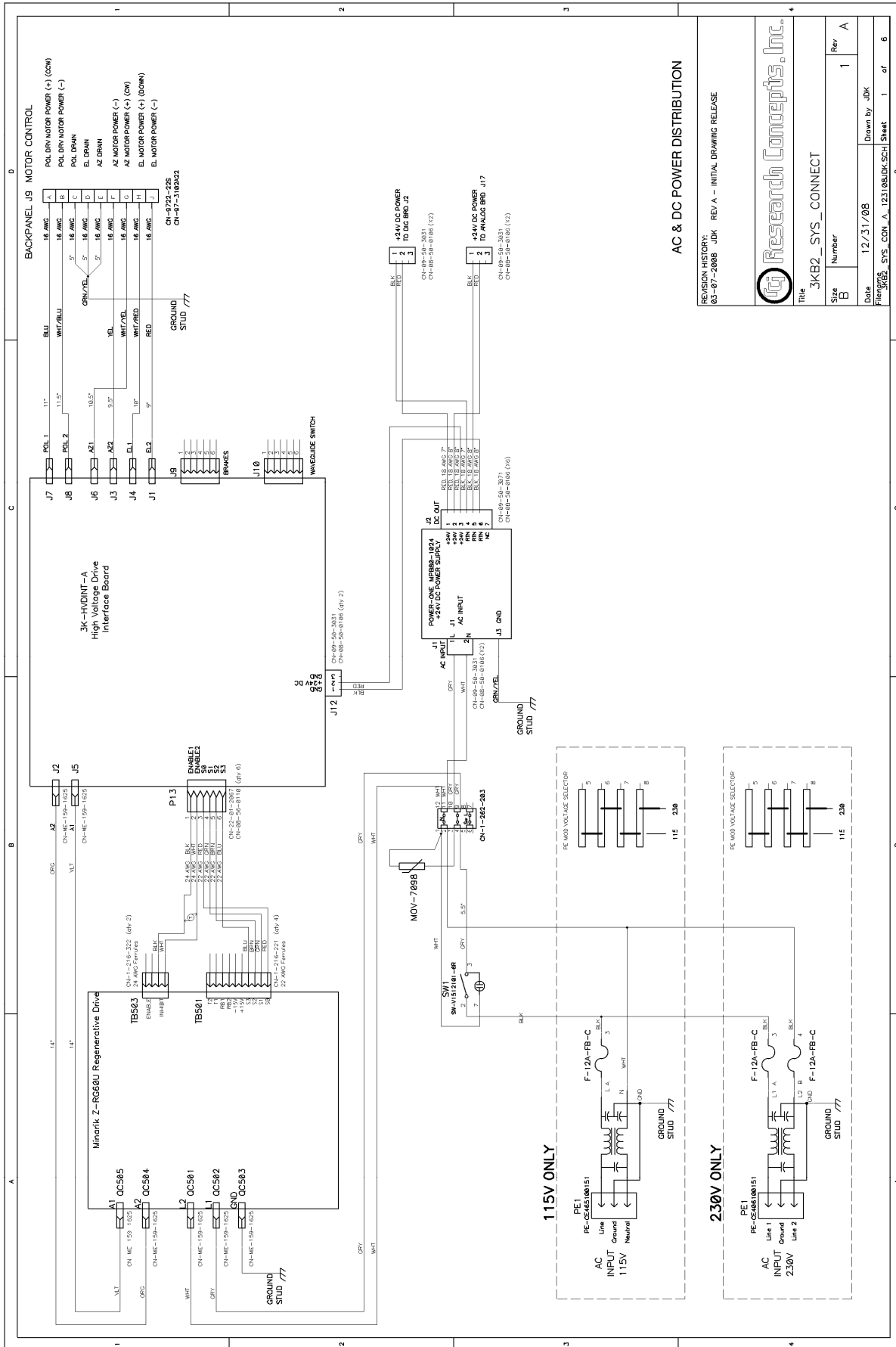
July 6, 2009

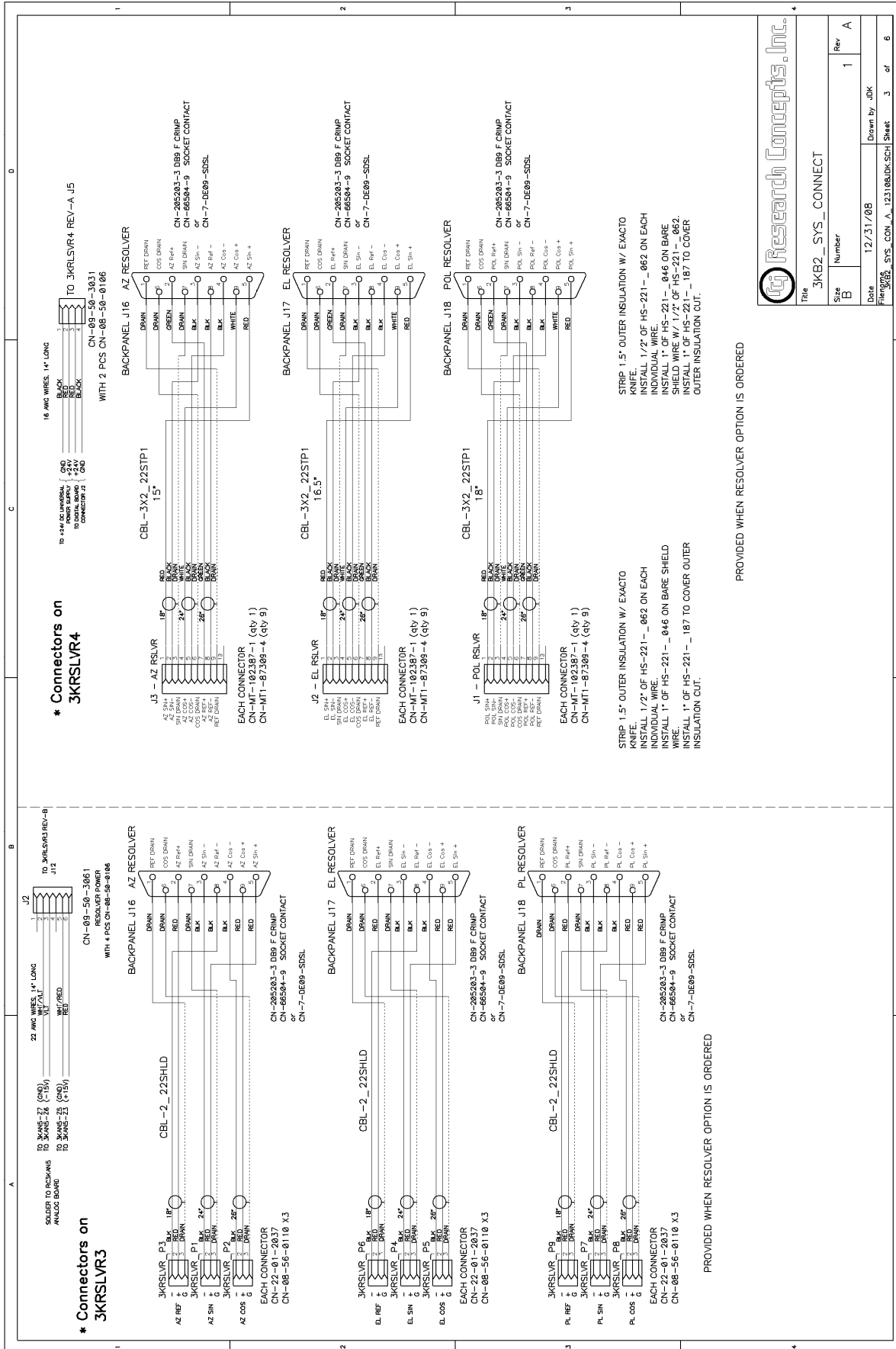
This appendix documents how the DC Motor Controller is configured for different variations of the RC3000. Use this appendix for serial numbers 2000 and greater.

This ACU employs the Minarik RG60U. The Minarik documentation is included in the back cover of the written manual. The electronic copy is located:

CD_ROM\RCIProductLiteratureCD\RC3000\appendices\ Minarik Drive Manual.pdf

- RC3000B Drive Interconnect Drawing
- High Voltage Drive Interface

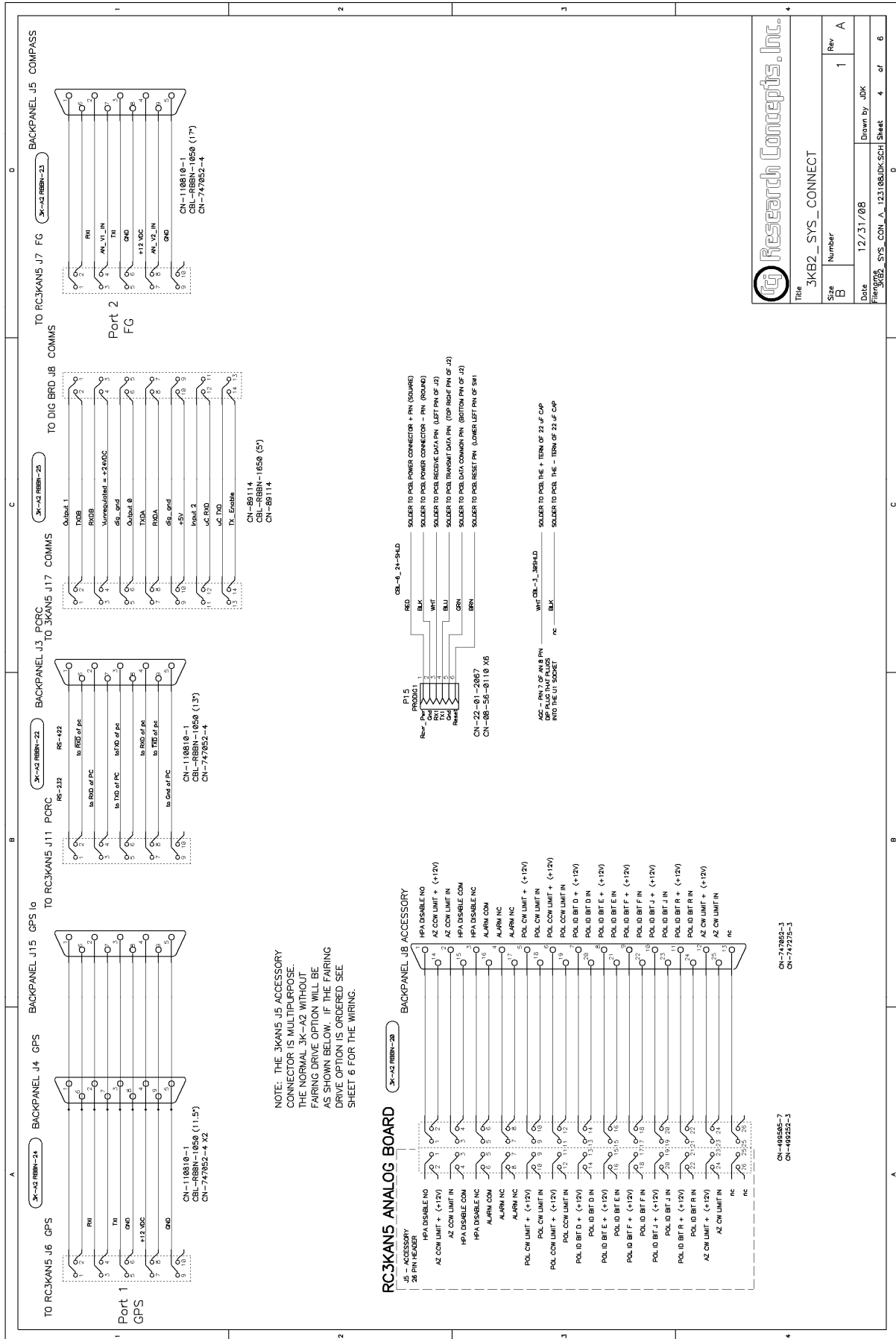


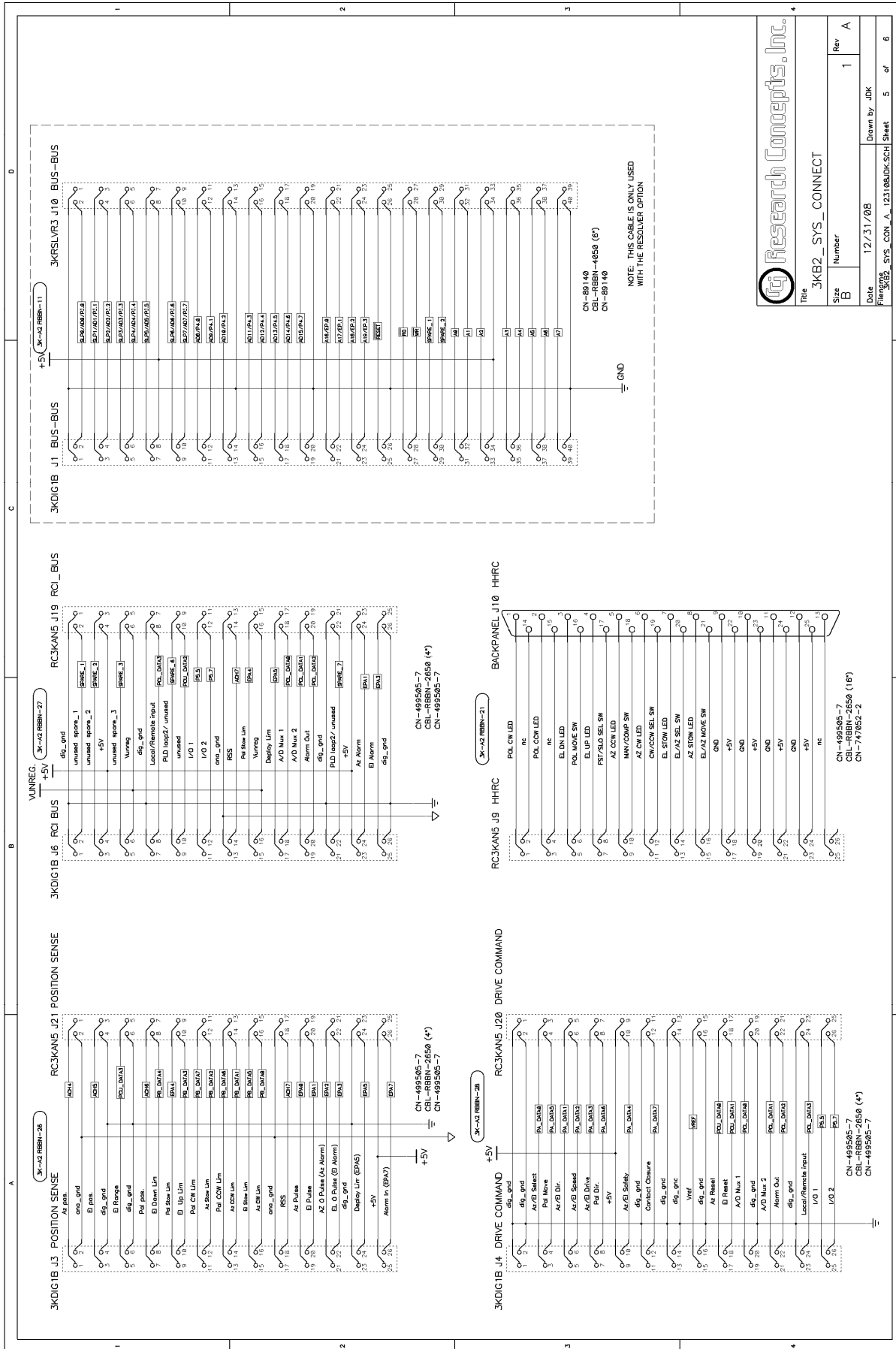


Research Concepts, Inc.

Title: 3KB2_SYS_CONNECT
 Size: B
 Number: 1
 Rev: A

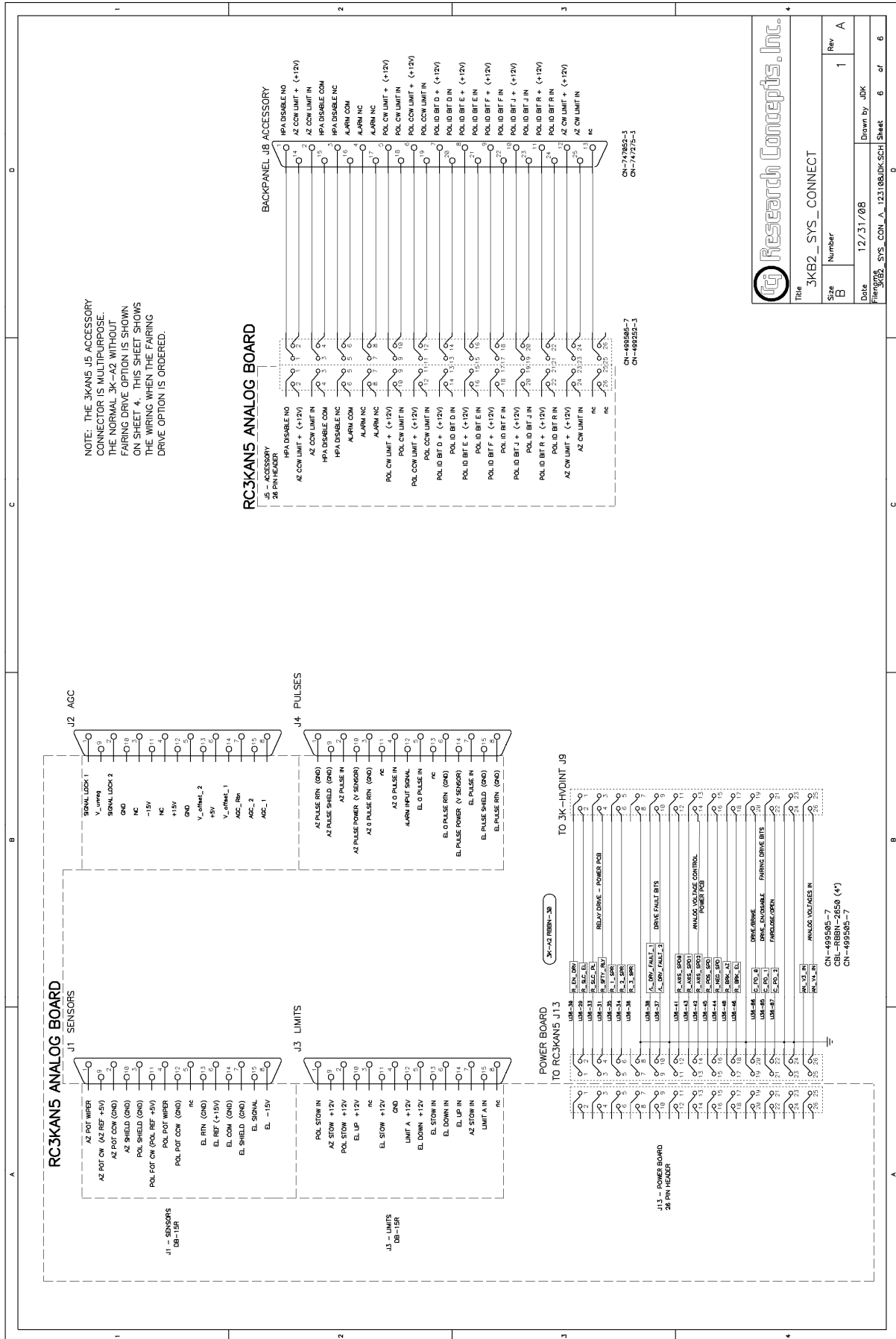
Date: 12/31/08
 Drawn by: JDK
 Sheet: 3 of 6





Research Concepts, Inc.

Title: 3KB2_SYS_CONNECT
 Size: B Number: 1 Rev: A
 Date: 12/31/08 Drawn by: JDB
 Part: 3000SYS_CON_A_123108LDK SCH Sheet: 5 of 6



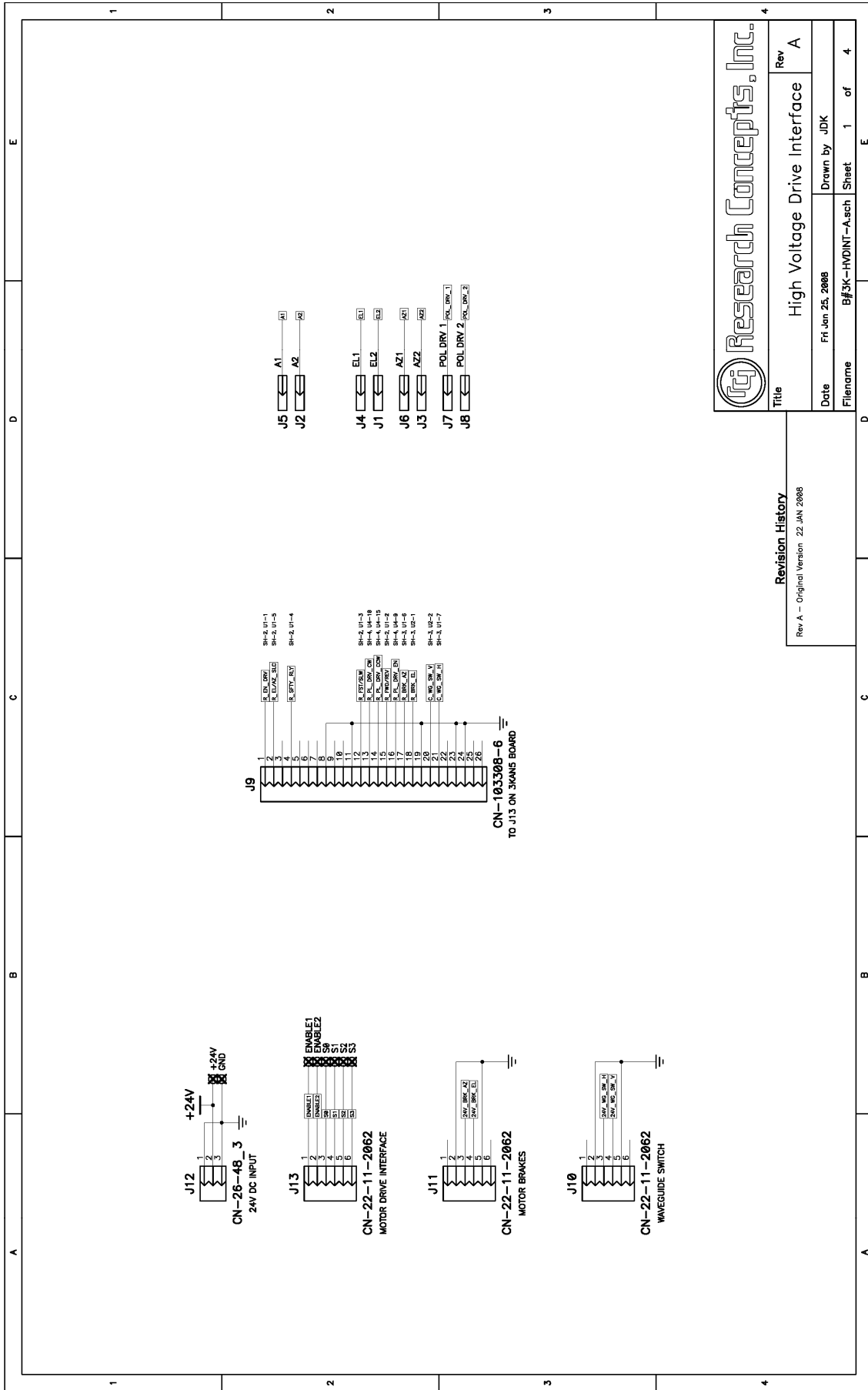
Research Concepts, Inc.

Title: 3KB2_SYS_CONNECT

Size: B
 Number: 1
 Rev: A

Date: 12/31/08
 Drawn by: JDK

Part: 495505_SYS_CON_A_123188LDK-SCN
 Sheet: 6 of 6



Research Concepts, Inc.

Title: High Voltage Drive Interface

Date: Fri Jan 25, 2008

Filename: Bf3K-HVDINT-Asch

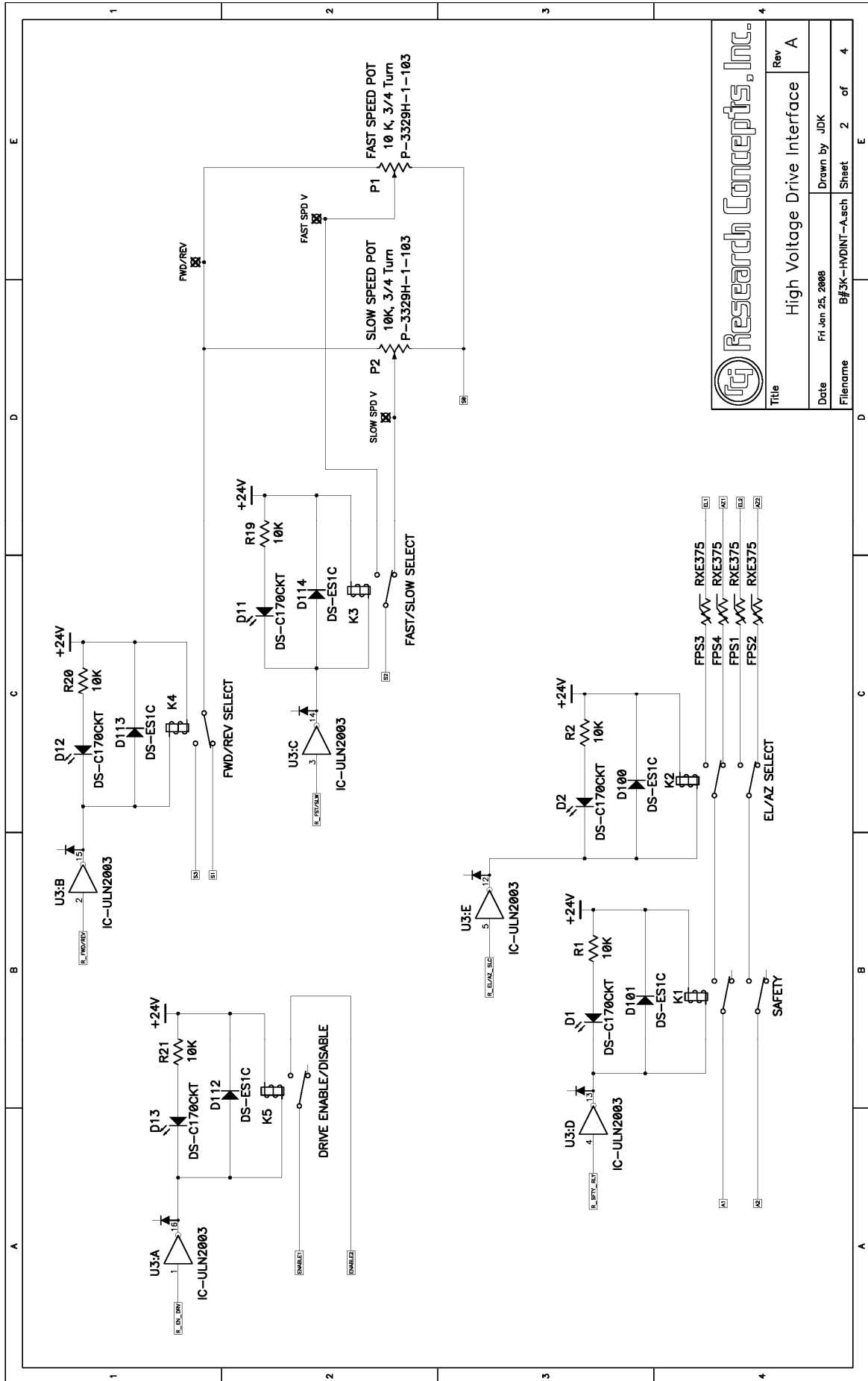
Rev: A

Drawn by: JDK

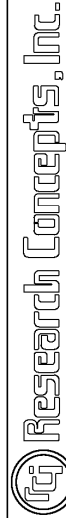
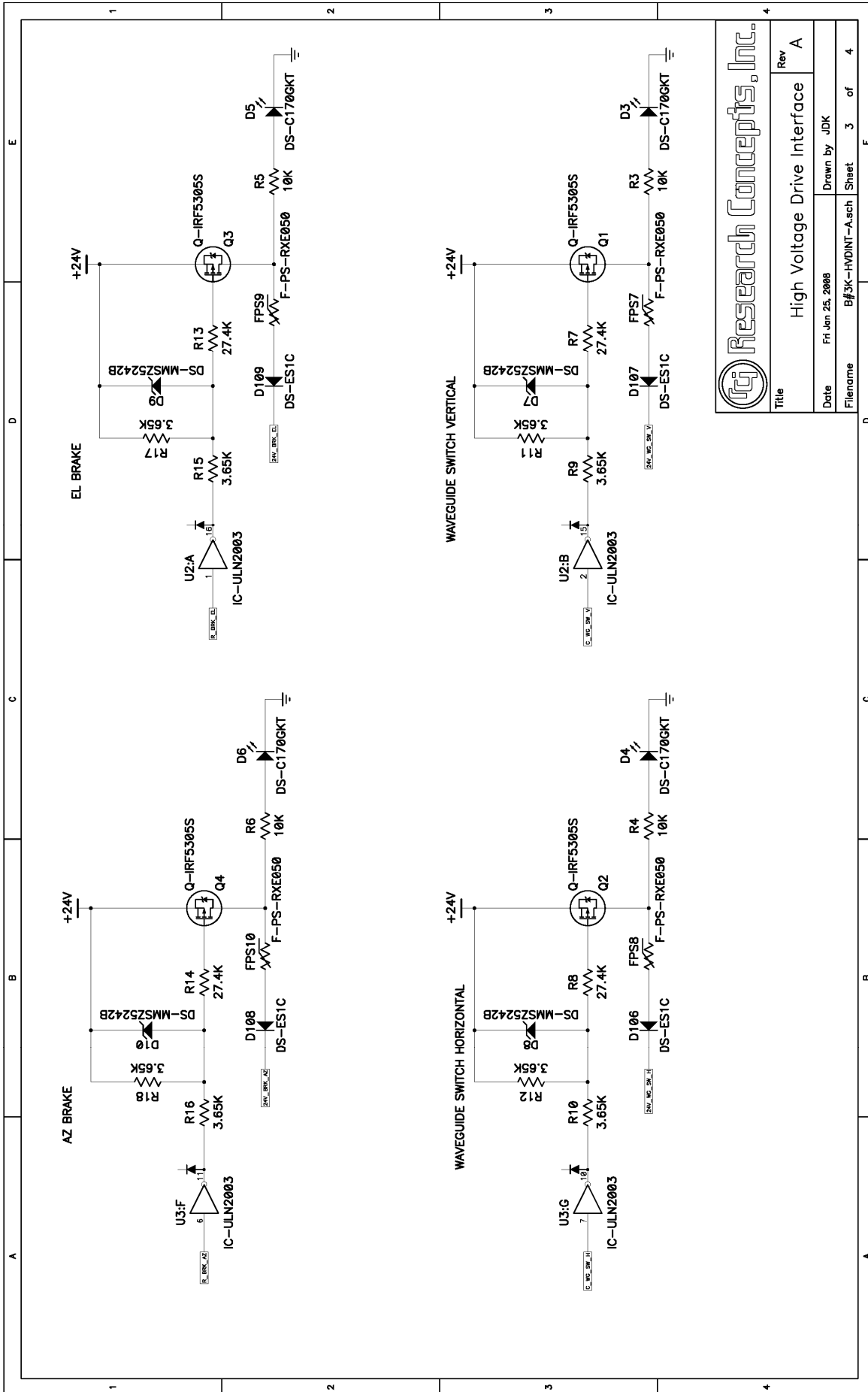
Sheet: 1 of 4

Revision History

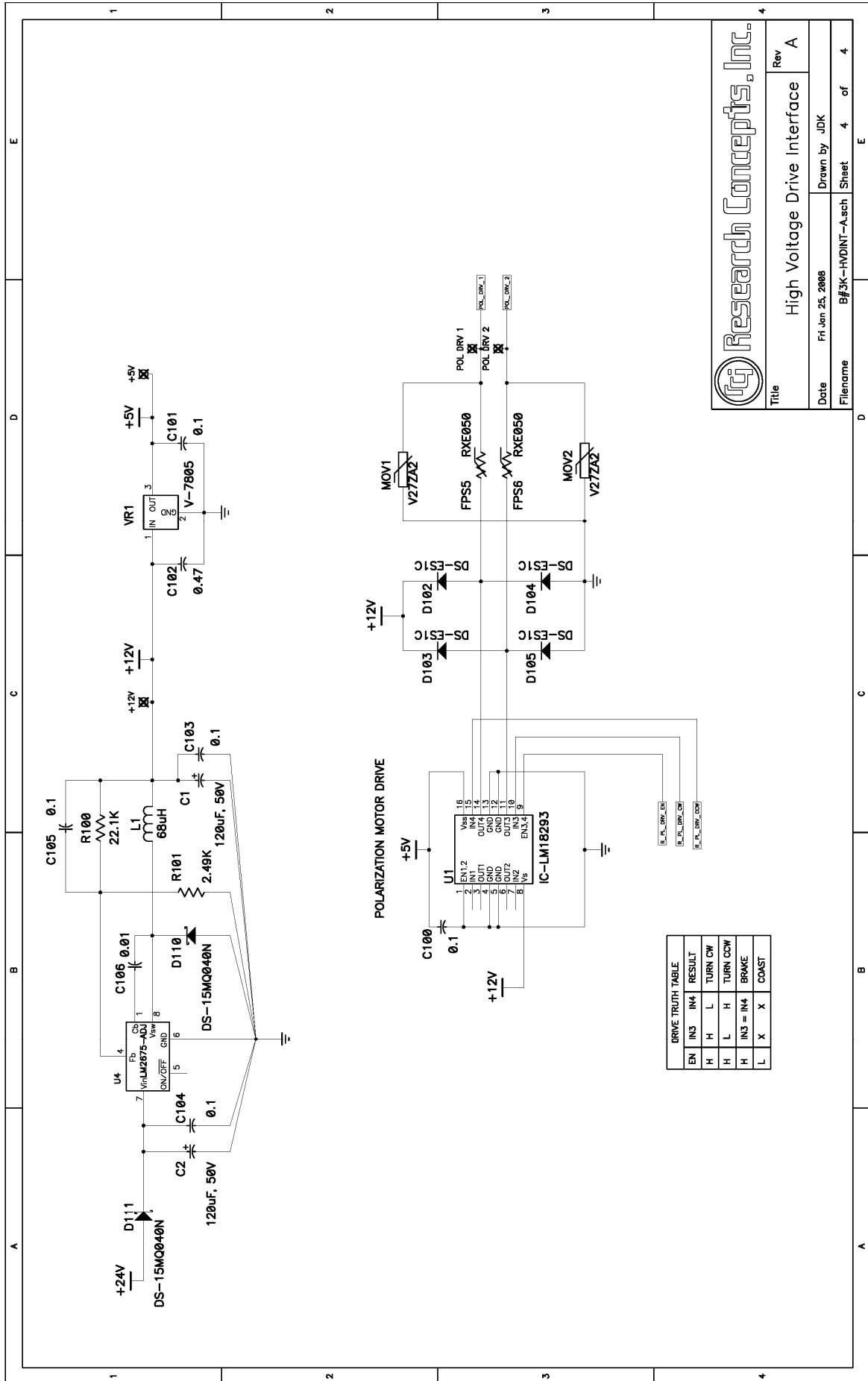
Rev A - Original Version	22 JAN 2008
--------------------------	-------------



Title		Rev	
High Voltage Drive Interface		A	
Date	Drawn by	JDK	
Fri, Jan 25, 2008			
Filename	B#	3K-HVDINT-A.sch	2 of 4
Sheet			



Title		Rev	
High Voltage Drive Interface		A	
Date	Fr, Jan 25, 2008	Drawn by	JDK
Filename	B#3K-HVDINT-A.sch	Sheet	3 of 4



Research Concepts, Inc.

Title: High Voltage Drive Interface Rev: A

Date: Fri, Jan 25, 2008 Drawn by: JDK

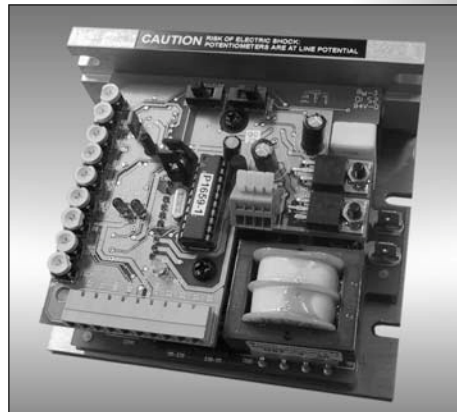
Filename: B#\JK-HVDINT-A.sch Sheet: 4 of 4

Cover page of the Minarik Drives User's Manual.



RG60U Series

RG60U	RG60U-PCM
RG61U	RG61U-PCM



Dual Voltage, Adjustable Speed,
SCR Regenerative Drive for
Permanent Magnet DC Brush Motors

User's Manual

RC3000B Appendix C Revision History

06 July 2009

TO created Appendix C for 3000B with serial numbers greater than 2000.

\\Archer\PRODS&LIT_Archive\RC3000\appendices\appC_3000B_TO_070609.pdf